

PART OF THE SE.1/4, SEC. 29, T.7N., R.1E., S.L.B & M.  
**ABBEYON ESTATES NO. 2**

IN WEBER COUNTY

TAXING UNIT: 36

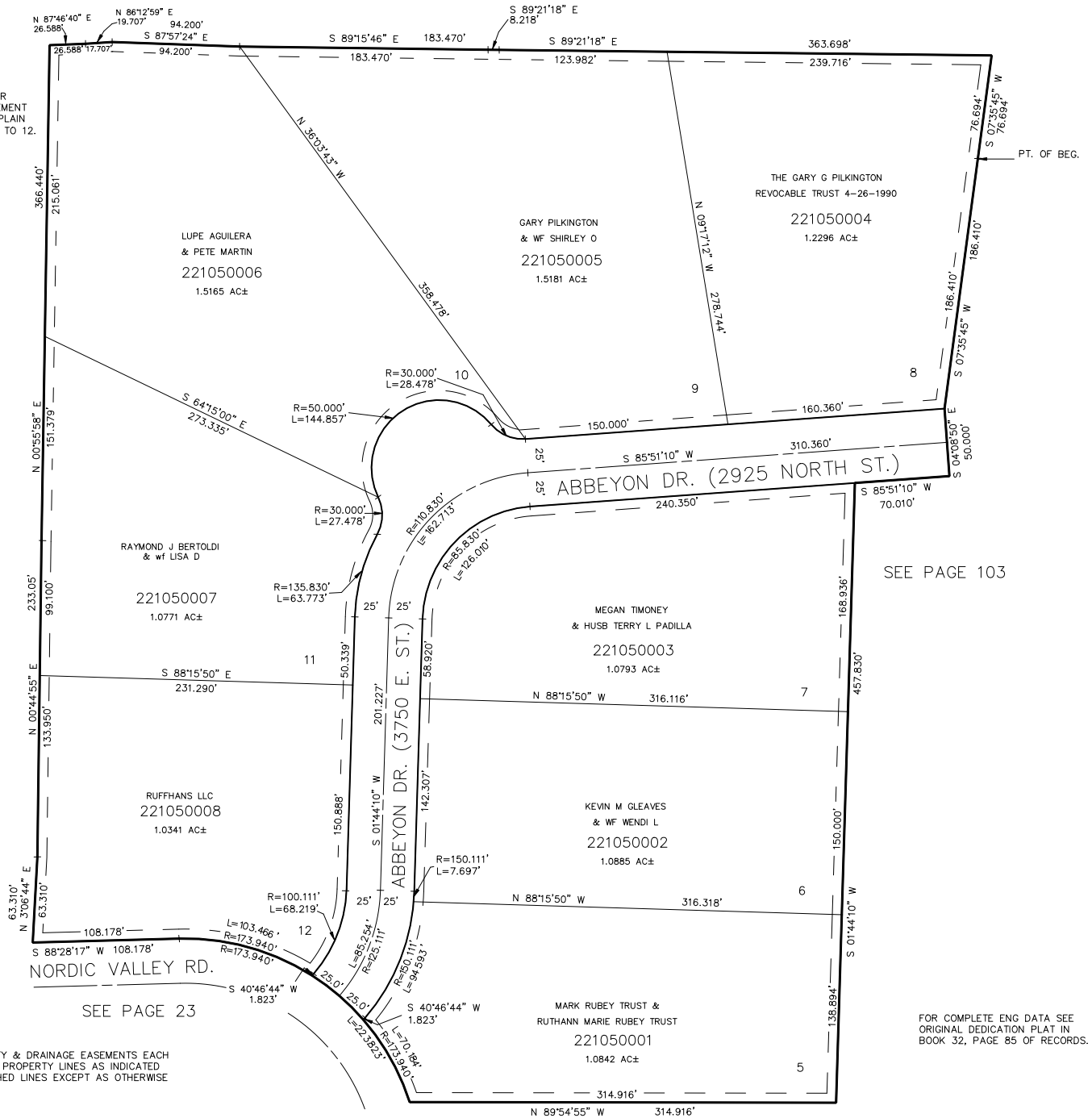
SCALE 1" = 60'

SEE PAGE 23

SEE DEDICATION PLAT FOR  
 NATURAL DRAINAGE EASEMENT  
 ON LOT 10, AND FLOOD PLAIN  
 INFORMATION ON LOTS 9 TO 12.

SEE PAGE 23

SEE PAGE 103



FOR COMPLETE ENG DATA SEE  
 ORIGINAL DEDICATION PLAT IN  
 BOOK 32, PAGE 85 OF RECORDS.

SEE PAGE 88